

## 4.16 Recreation

### 4.16.1 Introduction

This section presents an overview of recreational activities in the vicinity of the Proposed Project, reasonably foreseeable distribution components, and alternative sites. For descriptions of local laws, regulations, policies, and plans related to recreation, see Appendix A of this FEIR. The settings sections are followed by an analysis of the impacts of the Proposed Project, reasonably foreseeable distribution components, and alternatives on recreation.

### 4.16.2 Regulatory Setting

#### Federal Laws, Regulations, and Policies

No federal laws, regulations, or policies are applicable to recreation in relation to the Proposed Project, reasonably foreseeable distribution components, and alternatives.

#### State Laws, Regulations, and Policies

No state laws, regulations, or policies are applicable to recreation in relation to the Proposed Project, reasonably foreseeable distribution components, and alternatives.

### 4.16.3 Environmental Setting

#### Regional Parks and Recreational Resources

The City of Paso Robles is located along the central coast of California in northern San Luis Obispo County. The region is characterized by a diverse landscape of coastal mountain ranges, valleys, shorelines, and deserts trending from north to south. San Luis Obispo County offers a variety of recreational facilities including trails, golf courses, campgrounds, day use areas, and pools. Aquatic activities, including swimming, boating, kayaking, sport fishing, and surfing, are available from beaches on the western ocean shoreline to the inland lakes and rivers. Lake San Antonio and Lake Nacimiento, located to the northwest of Paso Robles, provide swimming and boating opportunities. South of Paso Robles, Santa Margarita Lake and its surrounding open space area provides opportunities for boating, fishing, hiking, equestrian and bicycle use (NEET West and PG&E 2017).

Numerous state parks have preserved beaches and habitat along the coast, including Hearst San Simeon, Harmony Headlands, Montaña de Oro, and Pismo State Beach. Oceano Dunes State Vehicular Recreation Area, at the southernmost edge of the San Luis Obispo County coast, provides a unique resource for off-road vehicle recreation in addition to its beach camping and hiking. The Carrizo Plain National Monument is located in southeastern San Luis Obispo County and contains over 200,000 acres of desert plains, offering opportunities for spectacular wildflower viewing, camping, bicycling, birding, hunting, hiking, and horseback riding (NEET West and PG&E 2017). The coastal mountain ranges consist of a distinct mosaic of brush scrub, oak woodlands, and forestlands that are appealing to hikers, campers, and travelers. In San Luis Obispo County, the Los Padres National Forest, which ranges from Monterey County to Los

Angeles County, begins west of Atascadero and runs south to the county border east of Santa Maria. The forest includes over 1,700,000 acres of public lands, over 1,200 miles of hiking and backpacking trails, and campgrounds and picnic areas (NEET West and PG&E 2017).

In Paso Robles, there are 96 acres of city parks, the largest of which are Barney Schwartz Park, Centennial Park, Sherwood Park, and Larry Moore Park. The city also maintains and manages 12 designated recreation trails within the city limits, and approximately 31 miles of existing bikeways with nearly 71 miles of planned bikeways. The Salinas River and Huer Huero Creek corridors provide recreational facilities, including equestrian paths and other trails. Recreational services provided by the city also include a municipal pool, a senior center, and activities and classes (NEET West and PG&E 2017).

### **Parks and Recreational Resources in the Vicinity of the Proposed Project, Reasonably Foreseeable Distribution Components, and Alternatives**

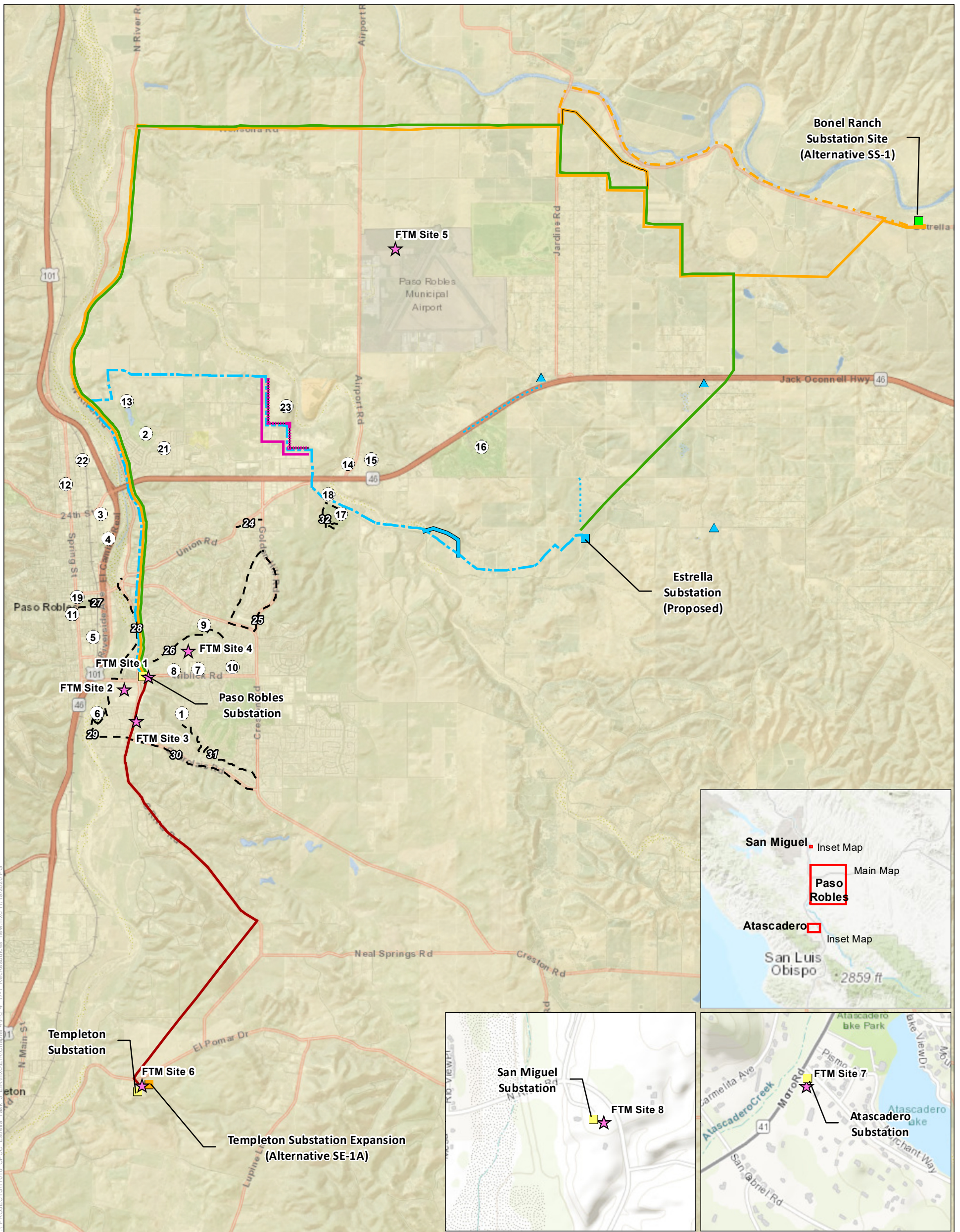
Figure 4.16-1 shows the locations of parks, trails, and other recreational resources in proximity to the Proposed Project, reasonably foreseeable distribution components, and alternatives. Table 4.16-1 further describes the recreational resources that are shown in Figure 4.16-1. As shown in Figure 4.16-1, a number of recreational resources are located in relative proximity to the Proposed Project features, although no parks, trails, or other resources are located on the proposed Estrella Substation site. Several 70 kV poles would be placed on the Paso Robles Sports Club property, but these poles would not displace the on-site recreational facilities.

Among the parks and recreational resources located in proximity to the Proposed Project features, Barney Schwartz Park, located along Union Road, would be within approximately 65 feet of the 70 kV power line alignment. As noted above, the Proposed Project 70 kV power line would pass through the edge of the Paso Robles Sports Club, which is on the north side of Union Road across from Barney Schwartz Park. The Proposed Project's 70 kV power line Minor Route Variation 1 is not near any existing parks or recreational resources. The new 70 kV power line segment also would pass adjacent to the Cava Robles RV Resort, which offers recreational opportunities on its private property, in the area of Golden Hill Road. Moving further to the west, the River Oaks Hot Springs Spa on Clubhouse Drive is located approximately 345 feet from the new 70 kV power line segment near where the new 70 kV power line segment would join the existing San Miguel-Paso 70 kV power line to create the reconductoring segment. The Salinas River Parkway Trail, which is a recreational trail segment within the Juan Bautista de Anza National Historic Trail corridor, passes approximately 100 to 300 feet of the reconductoring segment for the Proposed Project (as well as the reconductoring segments for Alternatives PLR-1A and PLR-1C). Additionally, one of the reasonably foreseeable new 21 kV distribution line segments would pass by Hunter Ranch Golf Course along SR 46. None of the reasonably foreseeable additional 21/12 kV pad-mounted transformers are located in proximity to existing parks or recreational resources.

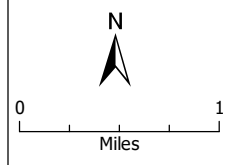
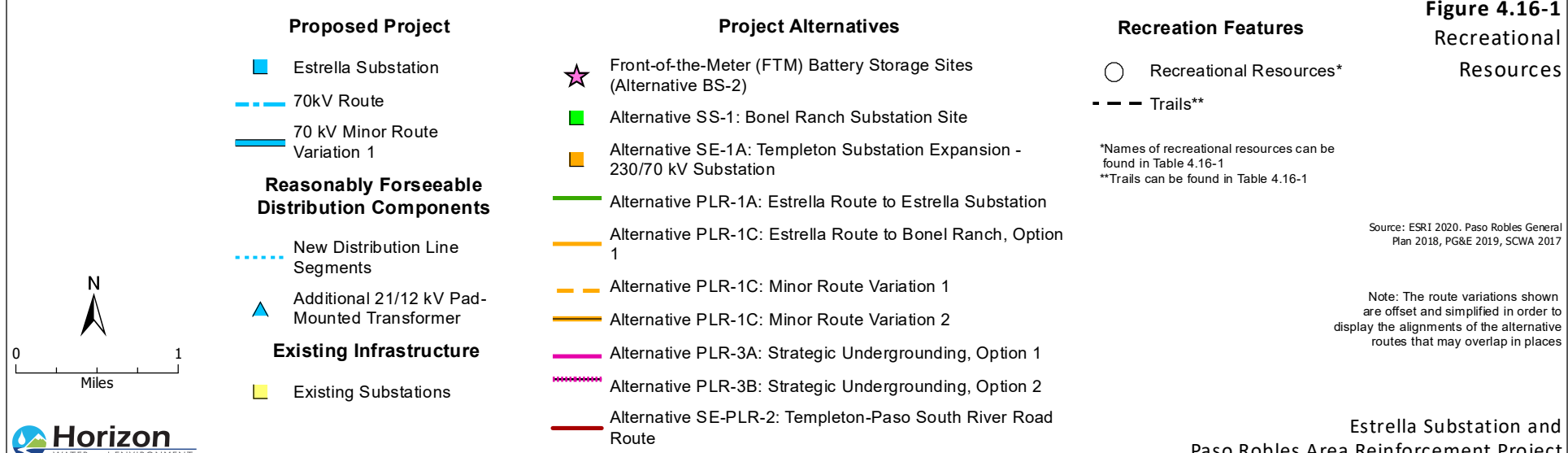
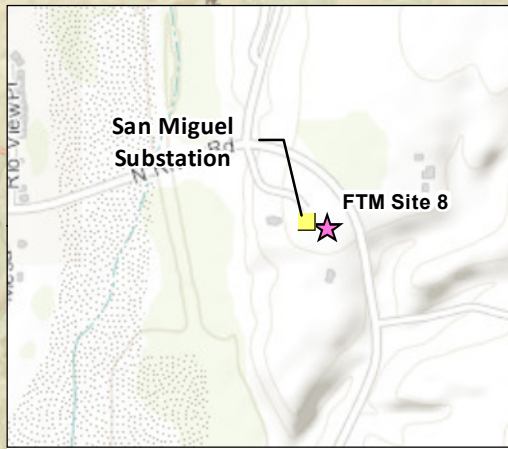
In general, as shown on Figure 4.16-1, relatively few recreational resources are located in close proximity to many of the alternatives (i.e., Alternatives SS-1, PLR-1A, PLR-1C, SE-1A, SE-PLR-2, and the example FTM Sites 5-8 under Alternative BS-2), which are located in largely rural areas of San Luis Obispo County. The Charolais Corridor Trail does cross the Alternative SE-PLR-2 alignment at the intersection of Charolais Road and South River Road. Alternative PLR-3 (both options) would pass by Cava Robles RV Resort along the same route as the proposed 70 kV

power line along Golden Hill Road. The example FTM Site 4, in particular, would be located adjacent to the baseball field at Paso Robles High School, while FTM Sites 1-4 would be located in relative proximity to a number of recreational resources in the Paso Robles east of downtown area.

*This page is intentionally blank.*



T:\PROJECTS\17010\_CPUC\_Estrella\_Task3\_EIR\mxd\ER\Chapter4\Fig. 4.16-1\_RecreationResources\_new.mxd 11/19/2020 PG



Source: ESRI 2020, Paso Robles General Plan 2018, PG&E 2019, SCWA 2017

Note: The route variations shown are offset and simplified in order to display the alignments of the alternative routes that may overlap in places

Estrella Substation and Paso Robles Area Reinforcement Project

*This page intentionally left blank*

**Table 4.16-1. Recreational Resources near the Proposed Project, Reasonably Foreseeable Distribution Components, and Alternatives**

ID #*	Name	Description/Features	Location and Approximate Distance to Proposed Project, Reasonably Foreseeable Distribution Components, or Alternatives
1	Pat Butler Elementary School	Public school sports field.	<u>700 Nicklaus Street.</u> 0.4 mile southeast of the reconductoring segments for the Proposed Project and Alternatives PLR-1A and PLR-1C; 0.3 mile east of Alternative SE-PLR-2.
2	River Oaks Golf Course, Pavilion, and Amphitheater	Private golf course (6-hole). Event venue.	<u>700 Clubhouse Drive.</u> 0.2 mile east of the reconductoring segments for the Proposed Project and Alternatives PLR-1A and PLR-1C.
3	Paso Robles Event Center	Private fairgrounds.	<u>2198 Riverside Avenue.</u> 0.3 mile west of the reconductoring segments for the Proposed Project and Alternatives PLR-1A and PLR-1C.
4	Pioneer Park	Public park. Softball field, skate park, basketball court, playground, and picnic area.	<u>2030 Riverside Avenue.</u> 0.3 mile west of the reconductoring segments for the Proposed Project and Alternatives PLR-1A and PLR-1C.
5	Robbins Field	Public park. Softball field.	<u>826 7<sup>th</sup> Street.</u> 0.5 mile west of the reconductoring segments for the Proposed Project and Alternatives PLR-1A and PLR-1C.

Notes: kV = kilovolt

\* The identification (ID) numbers listed in Table 4.16-1 refer to the numbers listed in Figure 4.16-1 for each recreational resource.

ID #*	Name	Description/Features	Location and Approximate Distance to Proposed Project, Reasonably Foreseeable Distribution Components, or Alternatives
6	Lawrence (Larry) Moore Park	Public park. Playground, barbeque area, playing field.	<u>155 Riverbank Lane.</u> 0.5 mile southwest of the reconductoring segments for the Proposed Project and Alternatives PLR-1A and PLR-1C; 0.3 mile west of Alternative SE-PLR-2; 0.4 mile southwest of FTM Site 2; 0.4 mile west of FTM Site 3.
7	Paso Robles High School field	Public sports field.	<u>801 Niblick Road.</u> 0.5 mile east of the reconductoring segments for the Proposed Project and Alternatives PLR-1A and PLR-1C; 0.5 mile east of Alternative SE-PLR-2; 0.5 mile east of FTM Site 1; adjacent to FTM Site 4.
8	Lenco (Casa Robles) Park	Public mini park.	<u>600 Palomino Lane.</u> 0.3 mile east of the reconductoring segments for the Proposed Project and Alternatives PLR-1A and PLR-1C; 0.3 mile east of Alternative SE-PLR-2; 0.3 mile east of FTM Site 1; 0.2 mile southwest of FTM Site 4.
9	Centennial Park	Public park and recreational center. Sports courts, playground, picnic areas, amphitheater, and community classrooms.	<u>600 Nickerson Drive.</u> 0.6 mile east of the reconductoring segments for the Proposed Project and Alternatives PLR-1A and PLR-1C; 0.3 mile north of FTM Site 4.
10	Melody Park	Public neighborhood park. Playground, basketball court, jogging path.	<u>Access at Melody Drive.</u> 0.8 mile east of the reconductoring segments for the Proposed Project and Alternatives PLR-1A, PLR-1C; 0.8 mile east of Alternative SE-PLR-2; 0.8 mile east of FTM Site 1; 0.4 mile east/southeast of FTM Site 4

Notes: kV = kilovolt

\* The identification (ID) numbers listed in Table 4.16-1 refer to the numbers listed in Figure 4.16-1 for each recreational resource.



ID #*	Name	Description/Features	Location and Approximate Distance to Proposed Project, Reasonably Foreseeable Distribution Components, or Alternatives
11	Paso Robles City Library	Public library. Meeting rooms, restrooms.	<u>1000 Spring Street.</u> 0.6 mile west of the reconductoring segments for the Proposed Project and Alternatives PLR-1A and PLR-1C.
12	Paso Robles Municipal Pool	Public swimming pool. Restrooms.	<u>530 28th Street.</u> 0.7 mile west of the reconductoring segments for the Proposed Project and Alternatives PLR-1A and PLR-1C.
13	River Oaks Hot Springs Spa	Outdoor and indoor mineral spa. Event venue.	<u>800 Clubhouse Drive.</u> 345 feet southeast of the new 70 kV power line segment for the Proposed Project; 0.2 mile east of the reconductoring segments for the Proposed Project and Alternatives PLR-1A and PLR-1C.
14	Ravine Water Park	Water park. Cabana, wave pool, slides, winding river.	<u>2301 Airport Road.</u> 0.3 mile east and northeast of the new 70 kV power line for the Proposed Project; 0.4 mile east of Alternative PLR-3 (both options).
15	Wine Country RV Resort	RV park. Pool, spa, event venue, picnic benches, game room.	<u>2500 Airport Road.</u> 0.5 mile east of the new 70 kV power line segment of the Proposed Project; 0.5 mile east of Alternative PLR-3 (both options).
16	Hunter Ranch Golf Course	Private golf course (18-hole). Restaurant.	<u>4041 E Hwy 46.</u> 0.6 mile north of the new 70 kV power line segment of the Proposed Project; 0.04 mile southwest of the northern reasonably foreseeable new distribution line segment.

Notes: kV = kilovolt

\* The identification (ID) numbers listed in Table 4.16-1 refer to the numbers listed in Figure 4.16-1 for each recreational resource.

ID #*	Name	Description/Features	Location and Approximate Distance to Proposed Project, Reasonably Foreseeable Distribution Components, or Alternatives
17	Barney Schwartz Park	Public park. Baseball and soccer fields, picnic areas, playgrounds, fishing lake.	<u>2970 Union Road.</u> 65 feet south of the new 70 kV power line segment of the Proposed Project.
18	Paso Robles Sports Club	Private recreation center. Outdoor garden, pool, tennis courts.	<u>2975 Union Road.</u> Adjacent (to the north) to the new 70 kV power line segment of the Proposed Project.
19	City Park	Public park. Playground, picnic area, lawn, gazebo.	<u>11<sup>th</sup> and Park Streets.</u> 0.5 mile west of the reconductoring segments for the Proposed Project and Alternatives PLR-1A and PLR-1C.
20	Independence and Liberty High School field	Public school sports field.	<u>812 Niblick Road.</u> 0.4 mile east of the reconductoring segments of the Proposed Project and Alternatives PLR-1A and PLR-1C; 0.4 mile east of Alternative SE-PLR-2; 0.4 mile east of FTM Site 1; 0.3 mile south/southeast of FTM Site 4
21	Kermit King Elementary School field	Public school sports field.	<u>700 Schoolhouse Circle.</u> 0.3 mile east of the reconductoring segments for the Proposed Project and Alternatives PLR-1A and PLR-1C.
22	George Stephan Center	Recreation center. Basketball courts, restrooms.	<u>3050 Park Street.</u> 0.5 mile west of the reconductoring segments for the Proposed Project and Alternatives PLR-1A and PLR-1C.

Notes: kV = kilovolt

\* The identification (ID) numbers listed in Table 4.16-1 refer to the numbers listed in Figure 4.16-1 for each recreational resource.

ID #*	Name	Description/Features	Location and Approximate Distance to Proposed Project, Reasonably Foreseeable Distribution Components, or Alternatives
23	Cava Robles RV Resort	<u>Privately-owned</u> RV park. Pool, spa, market, community center, game room, bistro, wellness center, splash pad, playground, walking trails, picnic area, outdoor bocce ball court and games, dog park.	<u>3800 Golden Hill Road.</u> Adjacent (to the east) to the new 70 kV power line for the Proposed Project; adjacent (to the east) to Alternative PLR-3 (both options).
24	Almendra Court Trail	Public 0.17-mile paved trail.	<u>Access at Crown Hill or Union Road.</u> 0.6 mile southwest of the new 70 kV power line for the Proposed Project; 0.80 mile southwest of Alternative PLR-3 (both options).
25	Water Tank Loop	Roughly 2-mile public paved loop trail.	<u>Access at Creston Road.</u> 0.8 mile southwest of the new 70 kV power line segment of the Proposed Project; 0.9 mile east of the reconductoring segments of the Proposed Project and Alternatives PLR-1A and PLR-1C.
26	Centennial Park Trail	0.92-mile paved trail.	<u>Access trail at Lana Street or Mohawk Court.</u> 0.1 mile east of the reconductoring segments for the Proposed Project and Alternatives PLR-1A and PLR-1C; 0.2 mile northeast of Alternative SE-PLR-2; 0.2 mile east of FTM Site 1; 0.2 mile west and north of FTM Site 4.
27	City Park Loop	0.36-mile flat downtown loop.	<u>11<sup>th</sup> and Park Streets.</u> 0.5 mile west of the reconductoring segments for the Proposed Project and Alternatives PLR-1A and PLR-1C.

Notes: kV = kilovolt

\* The identification (ID) numbers listed in Table 4.16-1 refer to the numbers listed in Figure 4.16-1 for each recreational resource.

ID #*	Name	Description/Features	Location and Approximate Distance to Proposed Project, Reasonably Foreseeable Distribution Components, or Alternatives
28	Salinas River Parkway Trail (Juan Bautista de Anza National Historic Trail)	1.6-mile paved (with dirt sections) public trail.	<u>Access at Riverbank cul-de-sac.</u> 100 to 300 feet west of the reconductoring segments of the Proposed Project and Alternatives PLR-1A and PLR-1C; 0.3 mile northwest of Alternative SE-PLR-2; 0.3 mile northwest of FTM Site 1.
29	Larry Moore Park Loop	0.5-mile paved and dirt trail.	<u>155 Riverbank Lane.</u> 0.5 mile southwest of the reconductoring segments for the Proposed Project and Alternatives PLR-1A and PLR-1C; 0.3 mile west of Alternative SE-PLR-2; 0.3 mile southwest of FTM Site 2; 0.4 mile west of FTM Site 3.
30	Charolais Corridor Trail	Public trail. 1.75-mile paved trail.	<u>Access at Charolais Road.</u> 0.6 mile south of the reconductoring segments of the Proposed Project and Alternatives PLR-1A and PLR-1C; crosses Alternative SE-PLR-2 alignment.
31	Snead/Rambouillet Trail	Public trail. 1.28-mile paved/dirt trail.	<u>Access at Snead and Rambouillet Road.</u> 0.6 mile southeast of the reconductoring segments of the Proposed Project and Alternatives PLR-1A and PLR-1C; 0.6 mile southeast of FTM Site 1; 0.5 mile east of Alternative SE-PLR-2.
32	Barney Schwartz Park Loop	0.88mile paved loop trail.	<u>2970 Union Road.</u> 65 feet south of the new 70 kV power line for the Proposed Project.

Notes: kV = kilovolt

\* The identification (ID) numbers listed in Table 4.16-1 refer to the numbers listed in Figure 4.16-1 for each recreational resource.

## 4.16.4 Impact Analysis

### Methodology

This impact analysis describes the impacts on recreation associated with implementation of the Proposed Project, reasonably foreseeable distribution components, and alternatives. Impacts were evaluated qualitatively, based on the potential for the facilities and construction activities to affect parks and recreational resources in relation to the significance criteria below.

### Criteria for Determining Significance

Based on Appendix G of the State CEQA Guidelines, the Proposed Project, reasonably foreseeable distribution components, and alternatives would result in a significant impact on recreation if they would:

- A. Increase the use of existing neighborhood and regional parks or other recreational facilities such that substantial physical deterioration of the facility would occur or be accelerated, or
- B. Include recreational facilities or require the construction or expansion of recreational facilities that might have an adverse physical impact on the environment.

### Environmental Impacts

#### *Proposed Project*

**Impact REC-1: Increase the use of existing neighborhood and regional parks or other recreational facilities such that substantial physical deterioration of the facilities would occur or be accelerated – *Less than Significant***

#### Construction

As described in Chapter 2, *Project Description*, peak daily employment during construction of the Estrella Substation would be 15 workers, while peak daily employment for construction of the power line would be roughly 30 workers. Many of these workers are likely to be hired from local areas, although some may travel from outside areas and stay in the Paso Robles area for the duration of the Proposed Project construction. During the construction periods, it is possible that workers may visit nearby recreation areas; however, the use of parks and other recreation facilities by this small, temporary population would be too low to have a substantial impact on existing facilities.

Construction crews also may use Barney Schwartz Park to access water; however, use of the water source would be temporary and would not cause deterioration of park facilities.

Additionally, three new poles of the Proposed Project's 70 kV power line would be placed on the Paso Robles Sports Club property along Union Road. The poles would be placed on the portion of the sports club property that is landscaped and would not directly displace any recreational facilities (e.g., tennis courts, pools, fitness center) at the sports club. Construction activities would require establishment of temporary work areas and access routes on the sports club property, but there is sufficient room on the undeveloped portions of the property to set up the work areas so as not to interfere with recreational facilities. While construction activities may

disturb recreational enjoyment at the property due to the noise and activities, these impacts would be short-lived and would not cause substantial physical deterioration of the recreational facilities. Construction activities would not limit public access to the Paso Robles Sports Club.

As noted in Table 4.16-1, the Proposed Project's 70 kV reconductoring segment would be located within 100 feet of the Salinas River Parkway Trail. As such, construction activity for the reconductoring segment would occur in close proximity to the Salinas River Parkway Trail, although this trail would not be directly impacted and access to the trail by the public would not be restricted. Recreational enjoyment of the Salinas River Parkway Trail may be temporarily impacted due to construction noise and activity along this section of the reconductoring segment, but the trail would not be subjected to any physical deterioration (no direct construction effects) or substantial increased use. In a similar vein, helicopter use for construction of the proposed new and reconducted 70 kV power line segments could temporarily disturb recreationists due to noise, but no long-term or physical effects to recreational facilities would occur due to these activities.

The Proposed Project's 70 kV power line would be installed along Golden Hill Road, which is directly adjacent to the Cava Robles RV Resort. Access to the resort is not expected to be impacted by construction, but construction activities during installation of this portion of the 70 kV power line could disturb recreational enjoyment of visitors to the private Cava Robles RV Resort. No direct physical impacts to the resort would occur. While the construction activity disturbance could potentially cause patrons/recreationists to use other existing recreational resources in the area in lieu of the resort, this disturbance would be temporary and would not be to such a degree as to cause substantial physical deterioration of these recreational facilities.

Overall, impacts to existing parks or recreational facilities from construction of the Proposed Project would be **less than significant**.

### **Operation**

The Proposed Project facilities would all be operated remotely once installed and no permanent staff would work on-site. Operation and maintenance of the Proposed Project components would require periodic (i.e., monthly or yearly) inspections and maintenance would occur on an as-needed basis. Additionally, as described in Section 4.14, "Population and Housing," the Proposed Project would not induce substantial population growth, leading to potentially more demand for recreational resources in the Paso Robles area. As such, the operation phase of the Proposed Project would not result in substantial increased use of existing parks and other recreational facilities. The small number of HWT, PG&E, and/or contractor staff that would conduct inspections and maintenance at the Proposed Project facilities may use nearby recreation areas in the region; however, this small potential increased use would not result in physical deterioration of these facilities.

During Proposed Project operation, crews and equipment may periodically access the new 70 kV power line segment traveling on local roads, or by temporarily establishing maintenance work areas along the road. In doing so, crews may pass by or work near public parks such as Barney Schwartz Park to access the power line for operation and maintenance activities. In general, maintenance activities would consist of small crews and small vehicles such as bucket trucks. No maintenance activities are anticipated to require park or trail closure, although unforeseen circumstances could require the use of heavy equipment or helicopter use near public parks or

trails. Maintenance would be temporary in nature and generally limited to a few days out of the year. As such, although operation and maintenance activities occurring near recreational resources could cause temporary disturbance to recreational enjoyment due to noise and associated activity, no substantial physical deterioration of the resources would occur.

Overall, impacts on recreational resources from Proposed Project operation and maintenance activities would be **less than significant**.

**Impact REC-2: Include recreational facilities or require the construction or expansion of recreational facilities that might have an adverse physical impact on the environment – No Impact**

The Proposed Project does not include the construction or expansion of recreational facilities. As discussed in Impact REC-1, the potential use of parks and other recreation facilities resulting from the Proposed Project would be too low to have a substantial impact on existing recreational facilities. Therefore, **no impact** would occur.

***Reasonably Foreseeable Distribution Components and Ultimate Substation Buildout***

Only a portion of one of the reasonably foreseeable new distribution line segments would occur near a recreational resource (Hunter Ranch Golf Course). The remainder of the reasonably foreseeable distribution components would not be located in close proximity to any parks or other recreational resources. Given that the reasonably foreseeable new distribution line segment in the area of Hunter Ranch Golf Course would be installed within the road right-of-way, it would not directly affect the golf course. Therefore, it would not require closure of any portion of the golf course or affect its use, potentially resulting in persons using other recreational resources in the Paso Robles area in lieu of the golf course. While the small number of construction workers needed for the reasonably foreseeable distribution components could use parks and recreational resources in Paso Robles during the construction period, this potentially increased use would be temporary and minor and would not result in substantial physical deterioration of these facilities. Ultimate substation buildout components would be primarily located within the already-built Estrella Substation and thus, would have no potential to impact recreational resources. Additional distribution feeders and/or 70 kV power lines that could be established through ultimate buildout of the Estrella Substation, as well as any associated impacts on recreation, are speculative as the routes for these facilities are not known. As a result, impacts under significance criterion A would be **less than significant**.

The reasonably foreseeable distribution components and ultimate substation buildout of Estrella Substation would not include any recreational facilities or involve the expansion of any parks or recreational facilities, the construction of which could have significance environmental impacts. Therefore, **no impact** would occur under significance criterion B.

***Alternatives***

**No Project Alternative**

Under the No Project Alternative, no impacts to recreation would occur. No new substation or new/reconductored 70 kV power line would be constructed; therefore, there would be no

potential for construction workers to use area parks and recreational resources or for the Proposed Project construction activities to temporarily disturb recreational uses. As a result, **no impact** would occur under significance criteria A or B.

### **Alternatives SS-1: Bonel Ranch Substation Site**

Similar to construction of the proposed Estrella Substation, construction of Alternative SS-1 would not result in any substantial impacts to recreational facilities. No recreational facilities are located near the Bonel Ranch Substation Site, and thus no recreational facilities would be disturbed or affected by construction activities. While it is possible that construction workers could use regional recreational parks or trails, this would not cause significant impacts (peak daily employment during construction of Alternative SS-1 would be the same as the proposed Estrella Substation). Therefore, impacts under significance criterion A would be **less than significant**.

Alternative SS-1 would not involve any construction or expansion of recreational facilities. Therefore, **no impact** would occur under significance criterion B.

### **Alternatives PLR-1A: Estrella Route to Estrella Substation**

No recreational facilities were identified in immediate proximity to the Alternative PLR-1A route, apart from those along the reconductoring segment, which are the same as those along the Proposed Project's reconductoring segment. Temporary impacts to these recreational resources, including Salinas River Parkway Trail, would be the same as the Proposed Project (see discussion under Impact REC-1). Construction of Alternative PLR-1A would not impact Barney Schwartz Park, the Paso Robles Sports Club, or Cava Robles RV Resort, and in that sense would have reduced recreational impacts compared to the Proposed Project. Any construction workers under Alternative PLR-1A using regional recreational resources would not cause substantial physical deterioration of these existing facilities for the same reasons as stated in the Proposed Project analysis. Therefore, impacts under significance criterion A would be **less than significant**.

Alternative PLR-1A would not involve any direct construction or expansion of recreational facilities. Therefore, **no impact** would occur under significance criterion B.

### **Alternative PLR-1C: Estrella Route to Bonel Ranch, Option 1**

No recreational facilities were identified in immediate proximity to the Alternative PLR-1C route, apart from those along the reconductoring segment of Alternative PLR-1C, which are the same as for the Proposed Project. Temporary impacts to these recreational resources, including Salinas River Parkway Trail, would be the same as for the Proposed Project (see discussion under Impact REC-1). Construction of Alternative PLR-1C would not impact Barney Schwartz Park, the Paso Robles Sports Club, or Cava Robles RV Resort, and in that sense would have reduced recreational impacts compared to the Proposed Project. Any construction workers under Alternative PLR-1C using regional recreational resources would not cause substantial physical deterioration of these existing facilities. Therefore, impacts under significance criterion A would be **less than significant**.

Alternative PLR-1C would not involve any construction or expansion of recreational facilities. Therefore, **no impact** would occur under significance criterion B.



### **Alternative PLR-3: Strategic Undergrounding (Option 1 & 2)**

As described in Chapter 3, *Alternatives Description*, Alternative PLR-3 (both options) would involve undergrounding a portion of the proposed new 70 kV power line through the Golden Hill Road area. Option 1 would follow a slightly different alignment by following Wisteria Lane and then Golden Hill Road, while Option 2 would follow the Proposed Project overhead 70 kV power line alignment. As shown in Figure 4.16-1, several recreational resources are located in relative proximity to the Alternative PLR-3 route options; however, only Cava Robles RV Resort would be located within 0.25 mile (Cava Robles RV Resort is located directly adjacent to the Alternative PLR-3 route options).

Construction activities for Alternative PLR-3 would temporarily impact use and recreational enjoyment of visitors to the private Cava Robles RV Resort, more so than construction of the Proposed Project. Construction of either Alternative PLR-3 route option would involve prolonged single lane closures along Golden Hill Road and the Cava Robles RV Resort driveway, which could hinder ease of access to the resort for the period of construction (lane closures would last 7 to 9 weeks on Golden Hill Road and 3 to 5 weeks on the Cava Robles RV Resort driveway). The potential access impacts would be minimized through implementation of Mitigation Measure TR-1, which would require implementation of traffic control measures (although this mitigation measure is not considered necessary to reduce recreation effects). Additionally, the trenching activities and underground conductor installation for Alternative PLR-3 would be much more involved than the overhead pole installation for the Proposed Project, leading to greater construction-related impacts to the Cava Robles RV Resort under this alternative. The potential for any construction workers under Alternative PLR-3 to use recreational resources in the area would be largely similar to the Proposed Project and, for the same reasons, would not cause substantial physical deterioration of these existing facilities. Overall, impacts under significance criterion A would be **less than significant**.

Alternative PLR-3 would not involve construction or expansion of any recreational facilities. Therefore, **no impact** would occur under significance criterion B.

### **Alternative SE-1A: Templeton Substation Expansion – 230/70 kV Substation**

Construction of Alternative SE-1A would not result in any substantial impacts to recreational facilities. No recreational facilities are located near the Templeton Substation Expansion site, and thus no recreational facilities would be disturbed or affected by construction activities. While it is possible that construction workers could use regional recreational parks or trails, this would not cause significant impacts (peak daily employment during construction of Alternative SE-1A would be the same as the proposed Estrella Substation). As a result, impacts under significance criteria A would be **less than significant**.

Alternative SE-1A would not involve construction or expansion of any parks or recreational facilities. Therefore, **no impact** would occur under significance criterion B.

### **Alternative SE-PLR-2: Templeton-Paso South River Road Route**

As shown in Figure 4.16-1, Alternative SE-PLR-2 would extend over Charolais Corridor Trail, which is a paved public trail that crosses South River Road at Charolais Road. Several other recreational resources are located in relative proximity to the alternative alignment, but none are within 0.25 mile. Construction activities would temporarily disturb or disrupt recreational

use of the Charolais Corridor Trail during the period when this portion of the 70 kV power line is being installed in this area. It is possible that the trail may be temporarily closed in this section during installation of the line and other construction activities, which could cause recreationists to use other facilities in the area. While this could increase use of these other area recreational resources, given the relatively short duration of the possible closure (construction of the entire Alternative SE-PLR-2 alignment would take 9 months) and the fact that much of the length of Charolais Corridor Trail would remain unaffected, this is unlikely to result in physical deterioration of any other parks or trails that might see increased use as a result of a Charolais Corridor Trail closure.

The parcel on the south side of Charolais Road would be used as a staging area during construction (see Figure 3-15 in Chapter 3, *Alternatives Description*). This could result in disturbance to recreationists due to noise from construction equipment and trucks entering and exiting the staging area. While the presence of the staging area adjacent to the trail may discourage some individuals from using the trail, thereby causing them to seek to use other parks or trails in the area, the staging area would not prevent access to the Charolais Corridor Trail. The staging area also would not impact the majority of the length of the trail. The number of construction workers under Alternative SE-PLR-2 (peak daily employment would be the same as the proposed 70 kV power line) who may use the Charolais Corridor Trail or other parks and trails in the area would not result in substantial physical deterioration in these facilities. Therefore, impacts under significance criterion A would be **less than significant**.

Alternative SE-PLR-2 would not involve construction or expansion of any parks or recreational facilities. Therefore, **no impact** would occur under significance criterion B.

### **Alternative BS-2: Battery Storage to Address Distribution Need**

As shown in Figure 4.16-1, several of the FTM sites examined for the purposes of this analysis for Alternative BS-2 would be located in proximity to recreational resources, although only the example FTM Site 4 would be located in close proximity (directly adjacent to Paso Robles High School baseball field). Construction activities at an FTM site, such as Site 4, that is in close proximity to recreational resources could disturb users due to noise and other activities. In the case of FTM Site 4, the site would be separated from the baseball field by an existing fence and construction activities would not directly affect use of the field. Generally, the scope of Alternative BS-2 construction activities at FTM sites, such as Site 4, would be reduced as compared to the proposed Estrella Substation and would likely involve fewer workers. While workers at any of the FTM sites may use nearby parks, trails, or other recreational resources, this would not result in substantial physical deterioration of any of these facilities or require the construction of new or expanded facilities. Alternative BS-2 would not be anticipated to involve the construction or expansion of any recreational facilities.

Overall, FTM BESS sites were selected for illustrative purposes only, BESS installations have not been designed and technologies have not been selected, and the specifics of Alternative BS-2 are unknown. Thus, project-level determinations cannot be made as impacts are speculative. Therefore, consistent with CEQA Guidelines Section 15145, no significance conclusion is provided for any of the significance criteria.

**Alternative BS-3: Third Party, Behind-the-Meter Solar and Battery Storage**

The specific locations of BTM solar and battery storage facilities are unknown. As described in Chapter 3, *Alternatives Description*, individual BTM solar and storage facilities would likely be installed within existing buildings. It is not anticipated that BTM battery solar and storage facilities would impact any recreational resources because they would be installed within existing buildings. Alternative BS-3 would not increase the use of existing recreational facilities, and no expansion of recreational facilities would occur.

Nevertheless, due to the fact that specific locations and characteristics of BTM resources procured under Alternative BS-3 are unknown at this time, project-level impact determinations are not possible as the impacts are speculative. Therefore, consistent with CEQA Guidelines Section 15145, no significance conclusion is reached under any of the significance criteria.

*This page intentionally left blank*